

Annex 1

Description of Current Passenger Transport Services Subsidised by the Council

Local Link

These services are provided as part of a tender agreement with Enterprise (401, 401A, 404, 406, 407, 408, 410, 411) and Centrebus (413). The day, times and the routes that these services take is the decision of the Council, not Enterprise or Centrebus. Details of the routes are below and the Council pays for all of these services. Operating the current service requires 12 vehicles (11 on the Enterprise routes, 1 on the Centrebus 413 route).

- **Local Link 401:** Stamford to Queensgate; serves Barnack, Bainton, Helpston, Glinton, then either Marholm, Bretton and City or Werrington Walton and City. Sundays only: 2 return journeys a day. [Click here for the timetable](#)
- **Local Link 401A:** Stamford - Thornhaugh - Wittering - Wansford - Ailsworth - Castor - Barnack - Ufford - Bretton – Queensgate; School days only, 1 return journey per day. [Click here for the timetable](#)
- **Local Link 404:** Stamford - Thornhaugh - Wittering - Wansford - Ailsworth - Castor - Bretton – Queensgate; Sundays only, 3 return journeys per day. [Click here for the timetable](#)
- **Local Link 406:** Werrington - Gunthorpe - Paston - Garton End - Queensgate - City Care Centre - Netherton - Westwood - Ravensthorpe - City Hospital - Bretton Centre - North Bretton - Mondays to Saturdays; every 30 mins to c.18.00. [Click here for the timetable](#)
- **Local Link 407:** Peterborough - Fletton - Stanground - Serpentine Green - The Ortons - Orton Northgate. Mondays to Saturdays; every 30 mins (every hour across Peterborough – Serpentine Green section). [Click here for the timetable](#)
- **Local Link 408:** Bretton - Walton - New England - Millfield – Queensgate - hourly Mondays to Saturdays [Click here for the timetable](#)
- **Local Link 410:** Newborough - Parnwell - Fengate - Queensgate. Hourly Mondays to Saturdays (last bus extends to Glinton, Northborough and Maxey). [Click here for the timetable](#)
- **Local Link 411:** Peakirk - Newborough - Parnwell - Fengate - Dogsthorpe - Garton End - Kings School - Queensgate. School days only; 1 per day [Click here for the timetable](#)
- **Local Link 413:** Maxey - Northborough - Glinton - Peakirk - Werrington - Walton - Millfield - Peterborough. 5 buses each way per day Mondays – Saturdays (No service Sundays) (Last departure from Peterborough towards Northborough and Maxey at c.16.05) (first and last bus extend to Maxey). [Click here for the timetable](#)

Map 1. Bus Routes in Peterborough

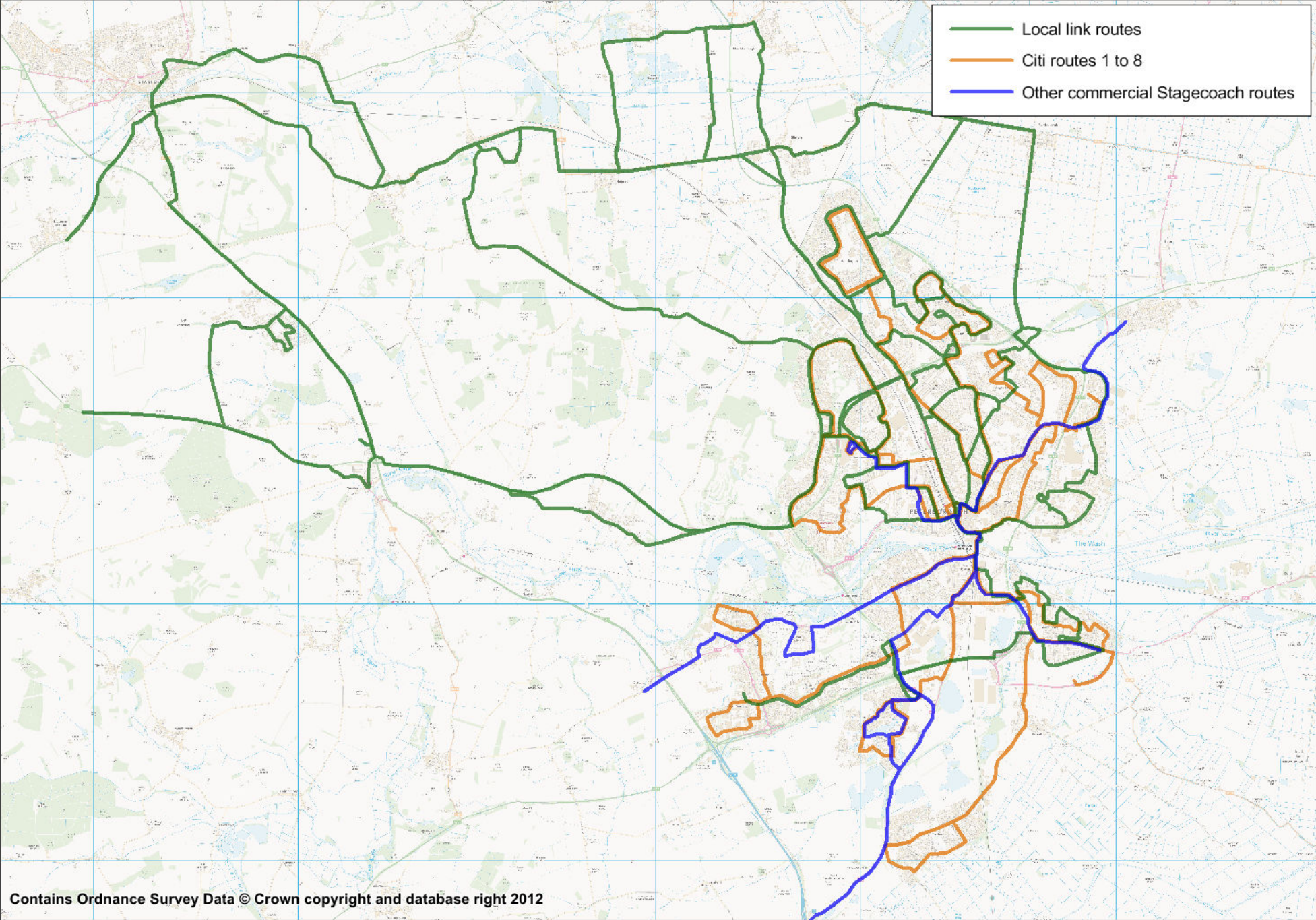


Table 1. Contract Budgets

The table below give details on the contract budgets for the Local Link services.

	Enterprise				Centrebus	Total
	B402	B406	B407	B409	B403	
Year	(401 & 404)	(406 & 408)	(401a & 407)	(410 & 411)	413	All Services
2012/13	£8,156	£242,614	£93,784	£63,202	£87,856	£495,612

Table 2. Passenger Numbers

Contract	Passengers (2012/13)
B402 – Local Link 404	2,482
B406 – Local Link 406 and 408	192,116
B407 – Local Link 401, 401A and 407	103,838
B409 – Local Link 410 and 411	50,926
Local Link 413	26,732
Total	376,094

Stagecoach services

The vast majority of Stagecoach services are provided on a commercial basis with no funding required from PCC. However, there are certain services at certain times of day which cannot be run on a commercial basis. In order for these services to operate, Peterborough City Council entered into a contractual arrangement with Stagecoach called the Voluntary Partnership Agreement. There are two services in the Voluntary Partnership Agreement that are not included in this review because those services are paid for by a developer (Stanground South) and the hospital. In return Stagecoach provide bus stop publicity and make contributions towards staff costs at the Travelchoice Centre in Queensgate bus station (approx £15k).

Current Stagecoach services supported (as part of a Voluntary Partnership Agreement)

- **Citi 1:** Werrington Centre - Walton - Millfield - City Centre - The Ortons - Orton Wistow. Also serves Orton Southgate at peak times. Mondays to Saturdays; every 10 mins to 19.00, Evenings 30 mins to 20.35 then hourly to 23.35. Sundays 30 mins, Evenings hourly after 18.00.
 - Supported after 20:30 Mondays to Saturdays, and after 17:30 Sundays
 - [Click here for the timetable](#)
- **Citi 2:** Gunthorpe - Paston - City Centre - Longthorpe - South Bretton - City Hospital. Mondays to Saturday; every 10 mins to 18.00, Evenings every 30 mins to 20.30 then hourly to 23.00, Sunday 2 per hour to 17.30 then hourly to 23.00.
 - Supported after 20:30 Mondays to Saturdays, and after 17:30 Sundays
 - [Click here for the timetable](#)
- **Citi 3:** City Hospital - Bretton Centre - North Bretton - Westwood - City Centre - Fletton Avenue - Stanground Park Farm. Mondays to Saturday; every 10 mins to 18.30, Evenings hourly to 23.00, Sunday 2 per hour to 18.00, then hourly to 23.00.
 - Supported after 20:30 Mondays to Saturdays, and after 17:30 Sundays
 - [Click here for the timetable](#)
- **Citi 4:** Parnwell - City Centre - Netherton - City Hospital. Monday to Saturday; every 20 mins to 20:00 then hourly to 23:00, Sunday; hourly to 23:00. (City Centre - City Hospital section does not operate after 20:30 Monday to Saturday, or after 18:00 on Sunday)
 - Supported after 20:30 Mondays to Saturdays, and after 17:30 Sundays
 - [Click here for the timetable](#)
- **Citi 5:** Cardea - Fletton - City Centre - Eastfield - Dogsthorpe - Bluebell / Yaxley - Fletton - City Centre - Welland. Mondays to Saturdays; every 20 mins (10 mins across common sections) to 18.00, Evenings hourly (half hourly across common sections), Sun hourly (half hourly across common sections).

- Supported after 20:30 Mondays to Saturdays, and after 17:30 Sundays
- [Click here for the timetable](#)

- **Citi 6:** City Centre - London Road - Serpentine Green - Hampton Vale - Hampton Hargate Mondays to Saturdays; every 10 mins to 19.45 Evenings hourly to 23.00 Suns hourly.

- Supported after 20:30 Mondays to Saturdays, and after 17:30 Sundays
- [Click here for the timetable](#)

- **Service 23 & 24:**

- **23:** Peterborough - Orton Mere - Lynch Wood - Elton - Wansford - Kings Cliffe - Woodnewton - Southwick - Rockingham Hills - Oundle. Hourly Mondays to Saturdays.
- **24:** Peterborough - Lynchwood - Orton Northgate - Elton - Oundle - Thrapston. Hourly Mondays to Saturdays.

- Supported journeys:

- Monday to Friday. One journey at 0820 to Lynchwood and return.
- Monday to Saturday. One journey at 0920 to Orton Waterville, Lynchwood and return.
- Monday to Saturday. Six journeys, which combined with existing commercial service, provide an hourly service to Orton Waterville and return 0930-1500.
- Monday to Friday. Three journeys at 1625, 1825 and 1855 to Lynchwood and return.

- [Click here for the timetables](#)

- **Service 37:** Spalding - Peterborough via Eye. Mondays to Saturdays, Hourly; Sundays 4 buses per day.

- Supported journeys:

- Sundays 4 buses per day. The subsidy paid is a cross-border subsidy to Lincolnshire County Council for the service to call at Eye, Newark, Eastfield College and Queensgate.

- [Click here for the timetable](#)

Current Stagecoach services supported through Section 106 / Agreement with Hospital

- **Citi 4:** Peterborough City Hospital - City Centre
A Monday to Sunday, 20 minute frequency daytime service.
(Agreement with Peterborough City Hospital)

- [Click here for the timetable](#)

- **Citi 5:** Cardea - City Centre
A Monday to Saturday, 20 minute frequency daytime service.
(Section 106)

- [Click here for the timetable](#)

Costs

The table below shows cost and passenger details for all the Citi evening and Sunday services that the Council subsidises.

The total cost of all Stagecoach services (minus the developer funded routes) would be £319,654 for the whole of 2013/14.

The Council has the current data available, shown in Table 1 below:

Table 3. Passenger Numbers and Associated Costs

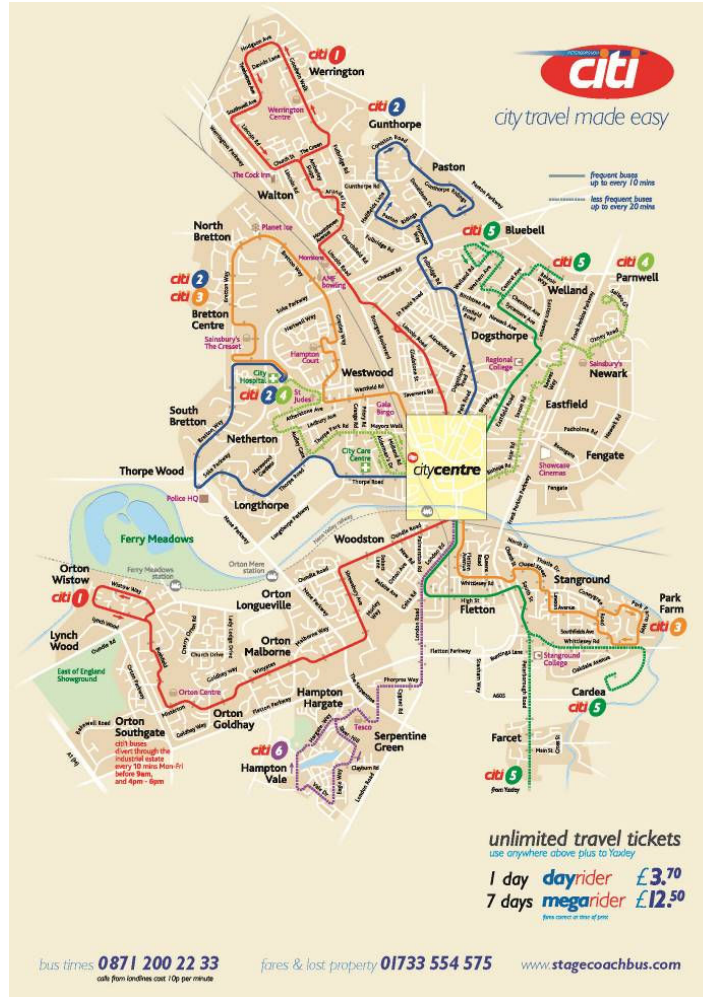
Contract	Passenger s (2012/13 annualised)
Citi 1 Mon – Sat	57,534
Citi 1 Sundays	20,070
Citi 2 Mon – Sat	12,490
Citi 2 Sundays	9,968
Citi 3* Mon – Sat	40,924
Citi 3* Sundays	14,884
Citi 4** Mon – Sat	31,346
Citi 4** Sundays	3,508
Citi 5*** Mon – Sat	27,026
Citi 5*** Sundays	3,146
Citi 6 Mon – Sat	11,828
Citi 6 Sundays	3,232

*Figures for Citi 3 is from when the service went from Bretton - Yaxley

** Figures for Citi 4 is from when the service went from Queensgate – Parnwell

*** Figures for Citi 5 is from when the service went from Queensgate – Dogsthorpe

Route maps for all the Stagecoach services are shown below



Route from Peterborough to Orton Waterville



© 2008 NAVTEQ/PTV AG/Map&Guide

- Bus
 ● Bus
 Departure with walk
 Arrival with footpath
- Footpath

1		Peterborough	Peterborough, Queensgate Bus Station	
2	●	Bus 23 Peterborough, Queensgate Bus Station Bay 15	Orton Waterville, Lady Lodge Drive adj	Lynch Wood, Showground
3		Orton Waterville, Lady Lodge Drive	Orton Waterville	

Route from Peterborough to Orton Waterville



© 2008 NAVTEQ/PTV AG/Map&Guide

 Bus
  Bus
  Departure with walk
  Arrival with footpath
 Footpath

1		Peterborough	Peterborough, Queensgate Bus Station	
2		Bus 24	Peterborough, Queensgate Bus Station Bay 15	Orton Waterville, Lady Lodge Drive adj Lynch Wood, Showground
3			Orton Waterville, Lady Lodge Drive	Orton Waterville

Route from Spalding, Bus Station to Peterborough, Queensgate Bus Station



1	● Bus 37	Spalding, Bus Station Bay 4	Peterborough, Queensgate Bus Station Bay 16	Peterborough, Queensgate Bus Station
---	----------	-----------------------------	---	--------------------------------------

Demand Responsive Services.

The Demand Responsive Services include: CallConnect, Community Link (Urban Dial-a-Ride), Octane (Rural Dial-a-Ride) and Women's Royal Voluntary Service (WRVS) Social Car Scheme.

CallConnect:

CallConnect is a unique bus service whose timetable is not fixed but responds to passenger requests (in effect a dial-a-bus service). This means its routes are different each day depending on the bookings made by passengers. Journey requests can be made by telephone, online or by SMS text message.

The service is designed to improve transport links for rural communities in the Stamford and Peterborough area and for local journeys within Stamford, but they do not provide journeys where there is already a frequent commercial bus service. Anyone can use the CallConnect bus service for any reason and as frequently as required. However, regular journeys (such as to work or school) cannot be guaranteed and passengers sometimes have to be flexible with the time they wish to travel. The service is operated by modern, fully accessible minibuses and the service operates between 7am-7pm Monday to Saturday. Registration to become a CallConnect member is free, but passengers must be registered in order to book a journey.

The CallConnect minibus picks up and sets down at designated locations in each village or town. Home pick ups and drop offs are also available for people who are unable to use conventional bus services due to age, disability or mobility impairment.

Community Link (Urban Dial-a-Ride):

Community Link is Peterborough City Council's urban door-to-door service. It is a wheelchair accessible service for anyone who lives in the urban area of Peterborough and experiences difficulty using standard public transport or who has no access to public transport. The service collects passengers from their home, drops them off in the city centre (four days a week) or a supermarket (once a week) and picks them up again for their return journey approximately two and a half hours later.

Octane (Rural Dial-a-Ride):

Operated by OCTANE, a non profit making, self financing association with a charitable status, runs the Rural Dial-a-Ride service which operates Monday – Friday. It provides fully accessible transport facilities for the use of frail, elderly and disabled people who can not use public transport. The Dial-a-Ride Scheme is a door to door service similar to Community Link.

WRVS Social Car Scheme:

The Social Car Scheme is for people who have difficulty using public transport or who have no access to public transport. The schemes operate similar to a taxi service but are run by volunteers. Although there is a charge for using the service, it can be cheaper than a taxi. The service usually must be booked 24 to 48 hours in advance. The Service aims to be as flexible as possible in respect of days and times of operation and length of journey. However, a service user is restricted to a maximum of two return journeys per week.

Luxecabs (342)

Luxecabs operate two return journeys, every Friday (except Bank Holidays) between Thorney and Whittlesey.

The vehicle used is an 8-seater minibus, with two departures from Thorney in the morning, and two return departures from Whittlesey around lunchtime.

Whittlesey Market takes place on Fridays.

Kimes 9

Kimes Service 9 (operated by Centrebus subsidiary) provides a commercial service between Peterborough, Stamford and Oakham.

Certain journeys are currently financially supported by Peterborough City Council

The Council subsidises the following journeys:

- AM journey that arrives at Kings School by 08.20 (school days only)
- PM journey that departs Kings School after 15.45 (school days only)
- 06.45 Stamford - Peterborough (Mondays to Fridays)
- 15.35 Stamford - Peterborough (Mondays to Fridays)
- 16.40 Peterborough - Stamford (Mondays to Saturdays)
- 17.40 Peterborough - Stamford (Mondays to Saturdays)
- 17.45 Stamford - Peterborough (Mondays to Saturdays)

[The full timetable is available here](#)